

PurgeGuard™

Wiring Instructions

Literature File No. 1108-01

Redi Controls

Models...

PRG-11/123-C2 & C3

Purge Units



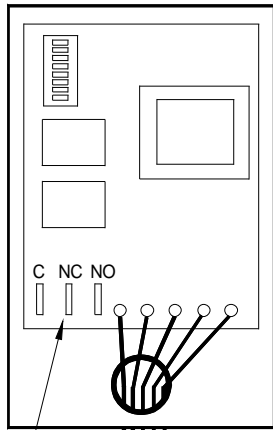
WARNING: Before proceeding with the following wiring modifications be sure to open and lock-out all electrical disconnects to prevent possible injury or death caused by electrical shock.

☞ See Wiring Schematic on Back of this Page •

- 1) Remove and discard the wire that runs from RLY2 output terminal on the P.C. Board and TB1-2.
- 2) Connect **Blue** wire from the **PURGE GUARD™** to RLY2 output terminal.
- 3) Connect **Yellow** wire from the **PURGE GUARD™** to TB1-2.
- 4) Connect **White** wire from the **PURGE GUARD™** to terminal either TB1-4 or TB1-5 (for PRG-11/123-C2) and TB1-5 or TB1-6 (for PRG-11/123-C3).
- 5) Connect **Black** wire from the **PURGE GUARD™** to terminal TB1-1.
- 6) Connect **Green** ground wire from the **PURGE GUARD™** to the control panel ground lug.

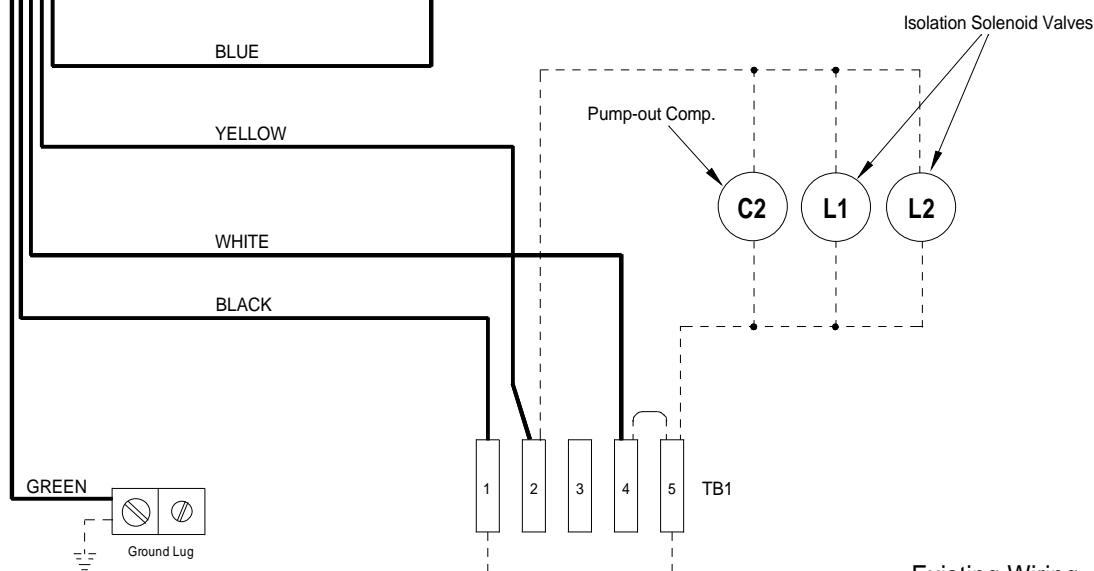
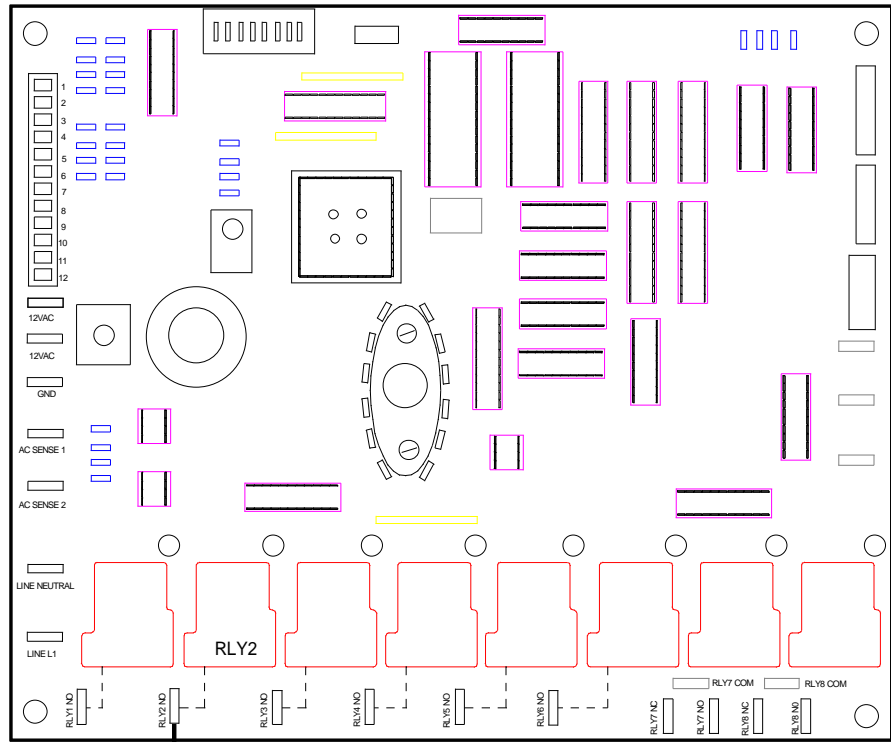
Wiring of PURGE GUARD™ is now complete. Please refer to Control Set-up and Operation instructions in the Installation and Operation Manual.

Purge Guard



Remote Alarm Contacts

P.C. Board



Purge Guard Wiring For... PRG -11/123-C2

NOTE: Only the wiring pertaining to the installation of the Purge Guard is shown.